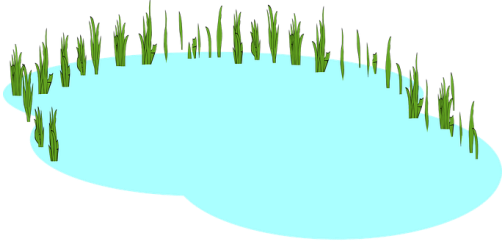


LÆS OG FORSTÅ

ORD - BOG 2

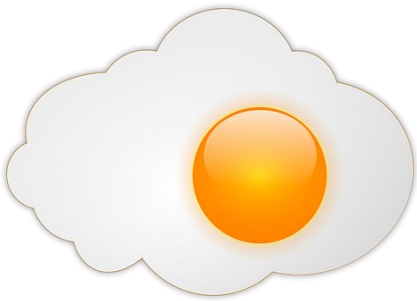




sø



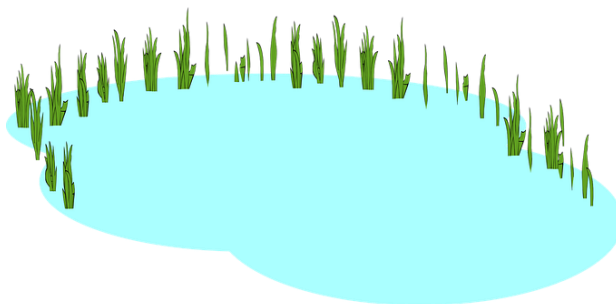
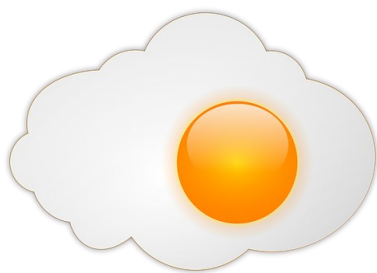
mus



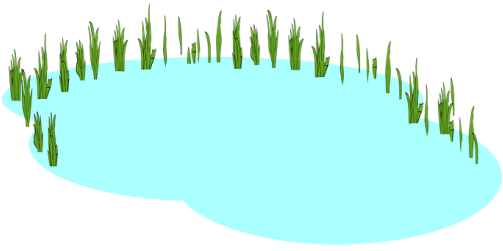
æg



lås



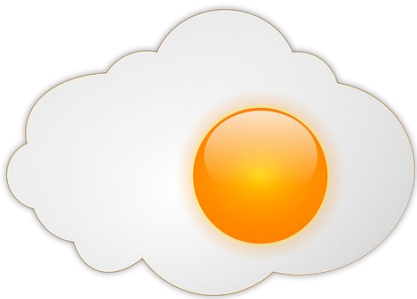
	ja	nej
en is		
en mus		
et æg		
en ø		
en lås		
en sø		
en kat		



en mus	
et æg	
en sø	



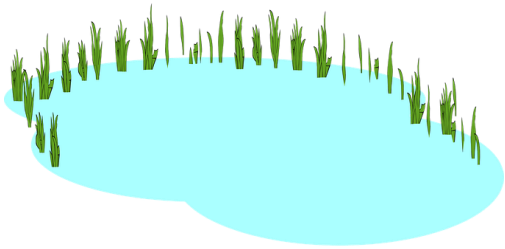
en mus	
et æg	
en lås	



en lås	
en sø	
et æg	



et æg	
en lås	
en mus	



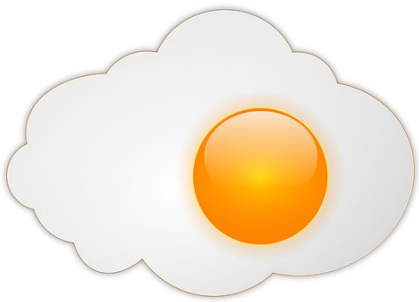
sø

si



mås

mus



æg

yg

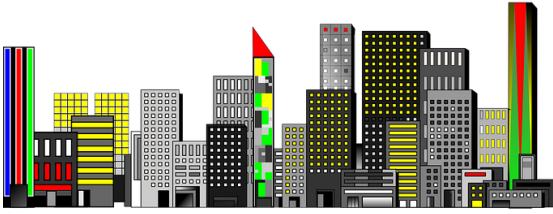


lis

lås



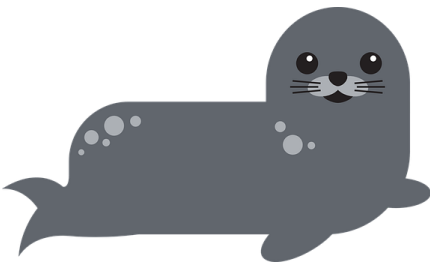
is



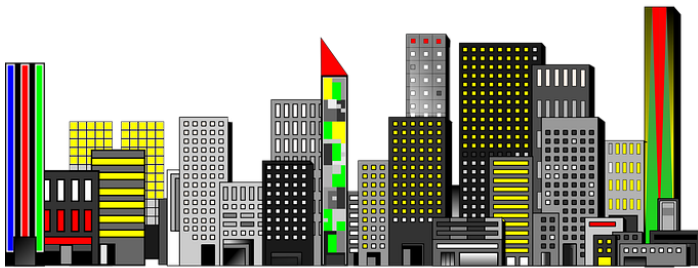
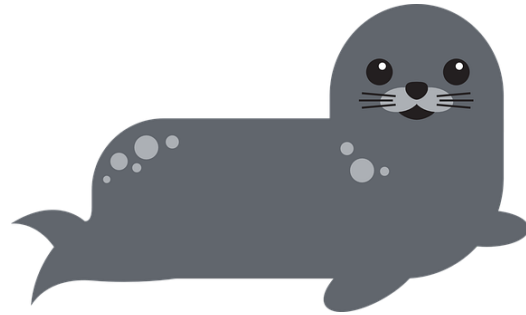
by



ulv



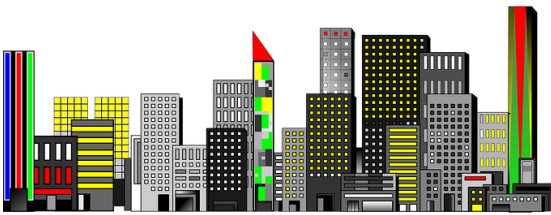
sæl



	ja	nej
en ulv		
en sø		
en by		
en sæl		
en mus		
en is		
en lås		



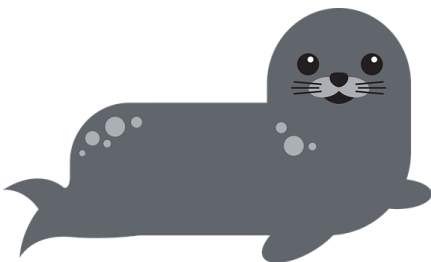
en by	
en ulv	
en is	



en sæl	
en by	
en ulv	



en is	
en sæl	
en ulv	

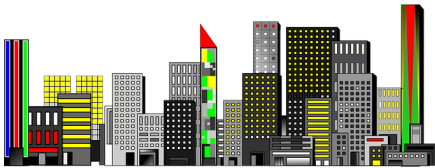


en by	
en sæl	
en is	



øs

is



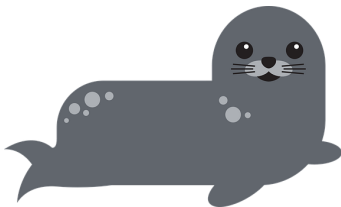
bæ

by



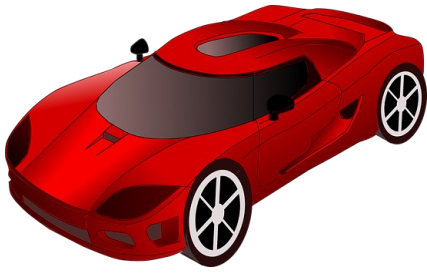
ulv

alv

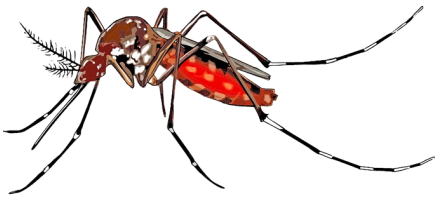


sul

sæl



bil



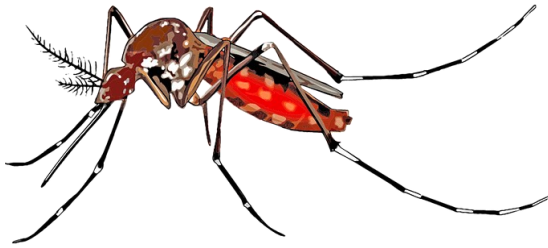
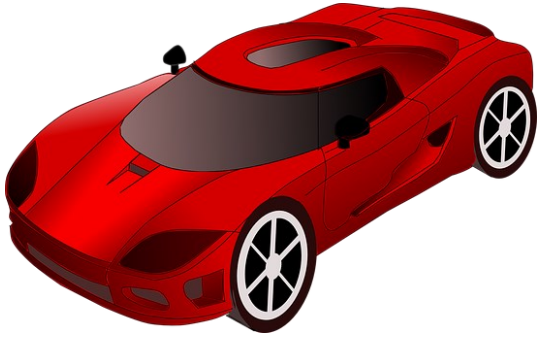
myg



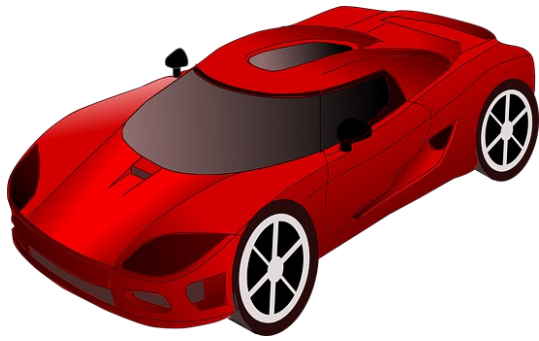
to



bål



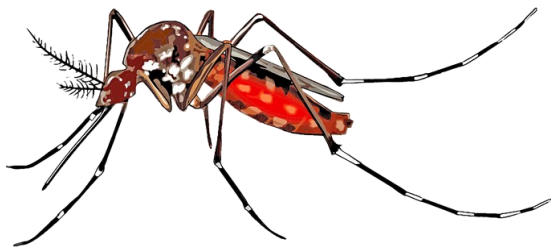
	ja	nej
to		
en ulv		
en myg		
en si		
et bål		
en sol		
en bil		



en myg

et bål

en bil



en myg

to

et bål



en bil

to

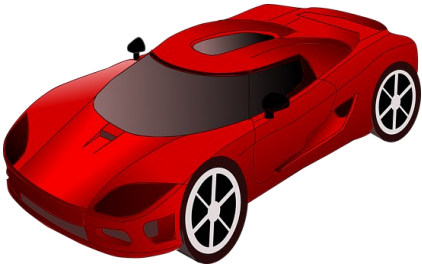
en myg



to

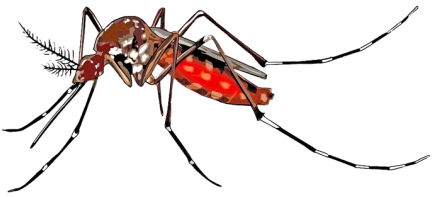
en bil

et bål



bil

byl



mug

myg



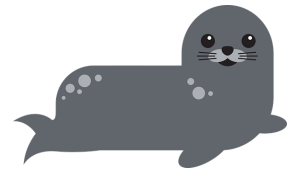
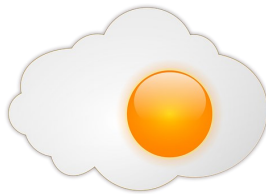
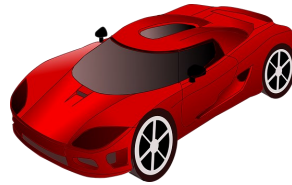
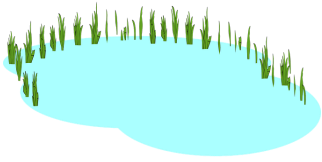
tå

to



bål

bal



sø	is	ski	si	fly
sky	bil	bro	ti	fasan
lås	myg	kat	blå	banan
æg	lam	by	mus	ulv
sæl	bil	to	ko	lås



